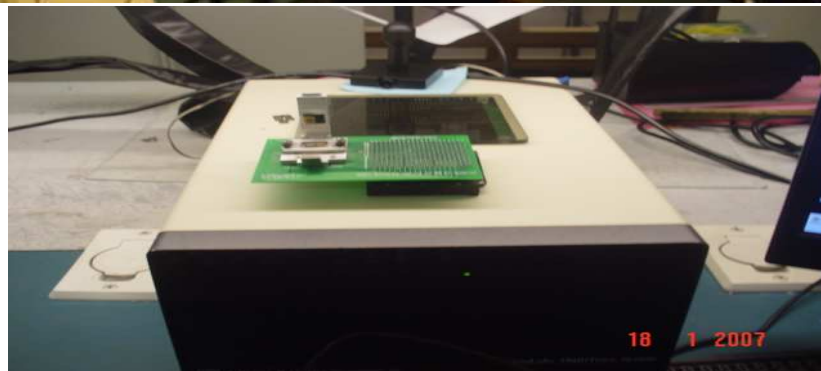
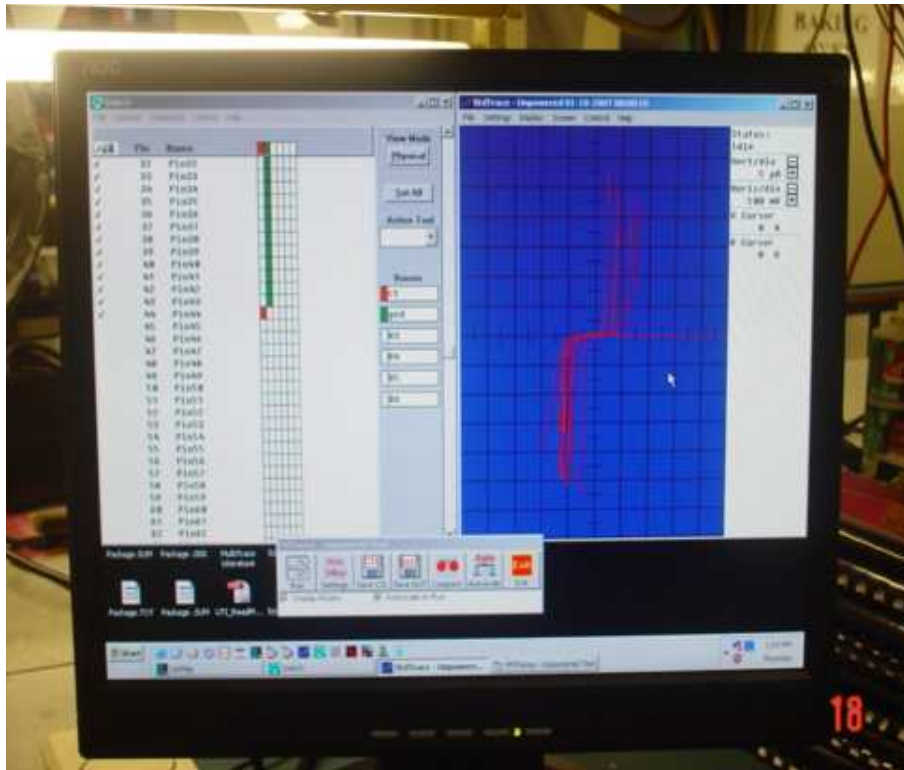
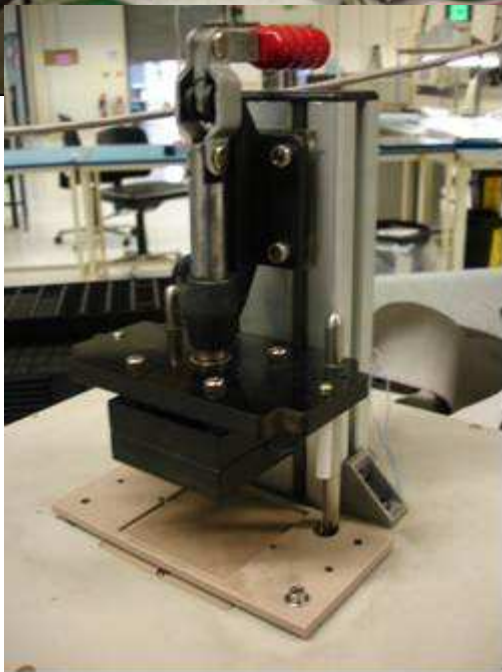
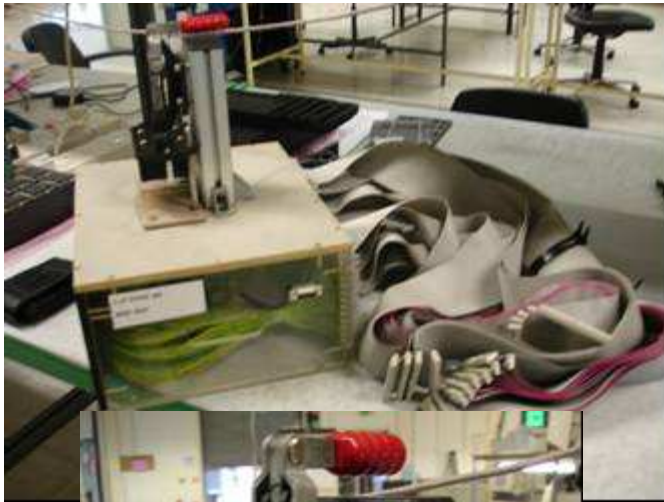


Automated Curve Trace Tester

- Provides non destructive method of testing device input, output and power pins



Retronix investment in BEST

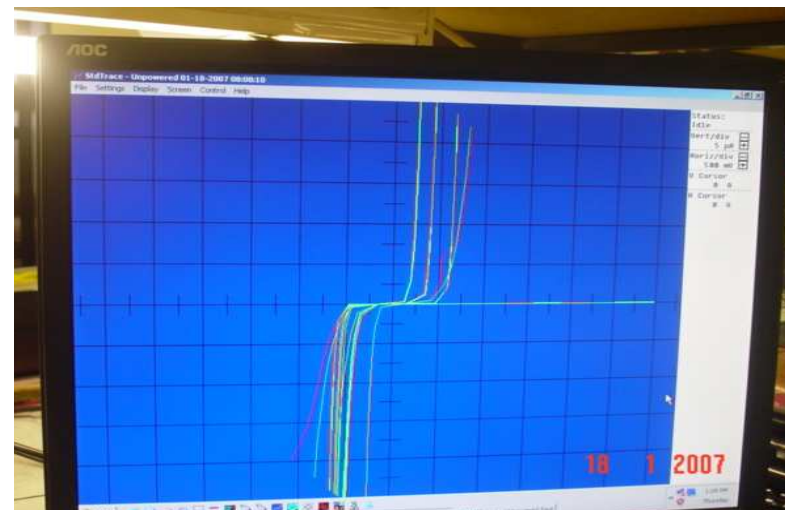
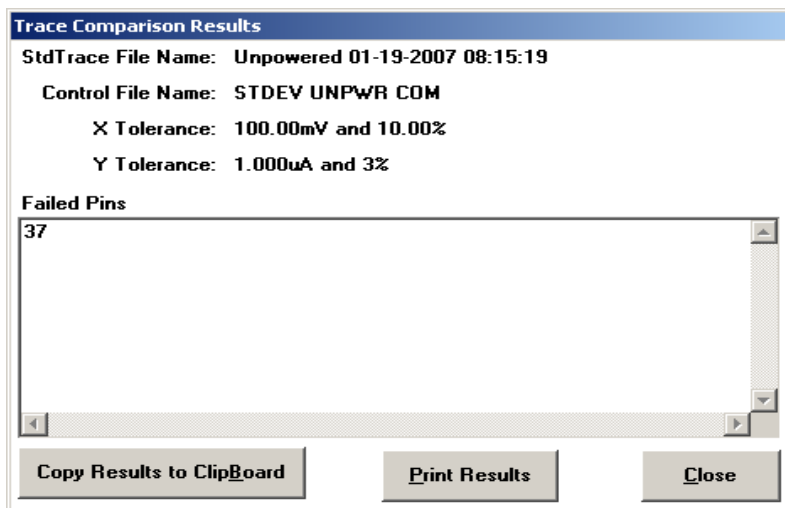


Investment to meet Customer requirements for verification of Electrical functionality by meeting the following:

- a) Equipment & tooling needs to meet device formats & technology.
- b) Training and developing staff expertise to support customers.
- c) Real-time test solution to meet single & multiple device testing.
- d) Identification of counterfeit devices.
- e) Identification of ESD or MSD damaged devices.
- f) Health-check for high value, aged ,rare or salvaged devices.

How Does It Work

- Applies voltage and current sources to DUT
- Connects these sources via a highly sophisticated switch matrix and customised or universal fixturing
- Measures the DUT responses to the applied stimulus
- Displays results on a graphical form on the screen
- Calculates, within specified tolerances whether device is good or bad.



Modes of Test

- Unpowered
- Powered

The test method you use depends on the device's complexity and the amount of test coverage desired

Faults Which Can be found

- Opens
- Shorts
- Diode Resistivity
- Silicon Connectivity
- ***As above plus Supply Current, Output source/sink current and other parameters typically found in the DC specifications***

Test Coverage

